



study in Germany

Welcome to Dresden

www.di-uni.de/en/

D/U Dresden
International
Associated Institute of the TU Dresden
University

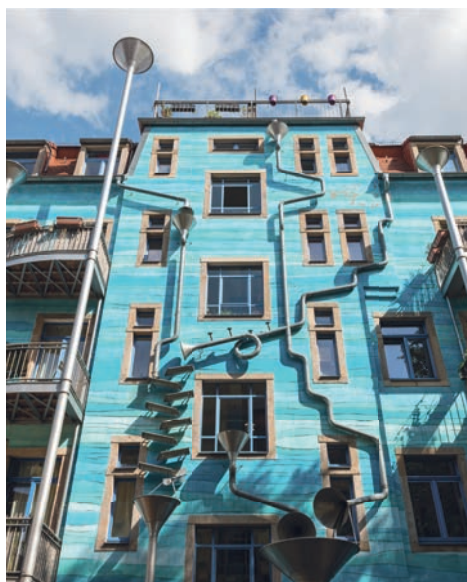
living in Dresden

a baroque city with vibrant neighborhoods





With a **population of 550,000**, Dresden has the perfect size to offer a **wide variety of leisure activities** without feeling chaotic or confusing.



In addition, there are around **300 sports clubs**, which enable the practice of around **70 different sports**, very good transport connections and excellent training and further education opportunities!

enjoy every season

Whether the **many green parks** in the spring, summer fun while riding your bike or having a barbecue by the **Elbe river**, enjoying the **old town** with a glass of Federweisser and a Flammkuchen in autumn or the numerous Christmas markets in winter, **Dresden has something to offer in every season.**

Dresden

a baroque city
with vibrant
neighborhoods



The city is also **famous for its rich art and culture**. There are numerous galleries, museums, cinemas, theaters and architectural treasures like the Semperoper, the Residenzschloss and the Zwinger, in **Dresden you never get bored!**



One more (insider) tip – the annual **neighborhood festivals**. The most famous and most visited one is the „Bunte Republik Neustadt“, but the neighborhood festivals in Pieschen or the Hechtviertel are also always enjoyable. At these festivals, (music) artists perform on many stages until the morning hours, drinks, tasty food and handcrafts are sold at numerous stands and people literally dance on the streets!

On Friday evening you can have fun at the **scene quarter – the Neustadt**. It invites you to dance in a variety of **bars, pubs and clubs**.

Also during the day the Neustadt and the neighboring quarters have an unmistakable flair – small handcraft shops, many **small galleries, cozy coffee** and tea shops and a lot of international **restaurants**.



this is Dresden

[view video](#)



living in Dresden

It takes a long time to see all the beautiful sights in Dresden. Even when you are done with these, the surrounding area has a lot to offer: the **Elbe Sandstone Mountains Saxon** and **Bohemian Switzerland** are perfect for hiking. The beautiful hunting **castle Moritzburg**, the former summer residence of the Saxon king – the **castle Pillnitz** with its splendid garden and the **historical small town Meißen** are only a small part of the Saxonian treasures worth seeing. Dresden's convenient location also makes it **easy to enjoy** a weekend in **Prague, Berlin or Leipzig**.



Accommodation guide



general information on housing

Generally, furnished accommodation is much less prevalent (and more expensive) than unfurnished accommodation. Unfurnished apartments are the rule. Apartments, whether furnished or unfurnished, are only let to a certain number of occupants which must be in good proportion to the number of rooms, according to German standards. Note that the designation of "rooms" counted in an advertisement does not correspond to the number of bedrooms like e.g. in some English-language housing markets. The number of rooms instead comprises all full-size rooms in addition to the kitchen and bathroom.

As housing standards in terms of space per person differ from one country to another, here is a simple rule of thumb to get an idea of what is considered a "reasonable" proportion: Calculate one room per adult at minimum. To give an example, an apartment advertised as a studio or 1-room apartment will accommodate one person only, but definitely not two adult roommates. A 2-room-apartment will accommodate two adults maximum. As for housing costs, you should expect to pay rent at approximately one third of your monthly net income (after taxes and social insurance contributions have been deducted) for an unfurnished single-person apartment (sometimes less). Furnished apartments tend to be more expensive than unfurnished ones (increasing your rent by approximately one third).

Unfurnished apartments may have a minimum rental period (i.e. 12 months). If you are interested in looking for long-term accommodation, we recommend booking temporary accommodation for one to two months first (e.g. at a guest house, bed and breakfast, hostel or hotel). This leaves you with enough time to search for longterm accommodation without being pressed for time. Please note that DIU students are usually not eligible to rent a room in a student dormitory from „Studentenwerk“.

We will support you in our best ability in your search for an appropriate room or apartment. However, due

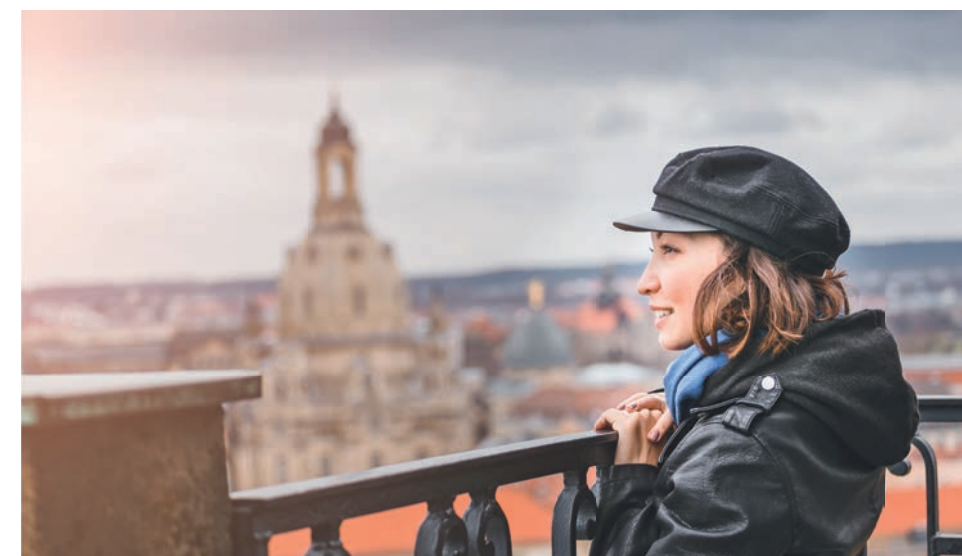


- there are many possibilities for you -



to the high effort involved in finding suitable places for all our clients, please understand that our capacity is also limited.

Be aware, we provide information that help you finding an apartment only. You have to choose and apply for the apartments yourself.



Short-term furnished accommodation

International guest house of Studentenwerk Dresden

The guest house has in total of 310 rooms. With the offered housing forms: 1-room apartments with own kitchen and bath, single rooms in flat-sharing communities and double rooms.

All rooms are completely furnished. Quilt and pillows, bed linen as well as towels and tea towels are available. Each room has free internet access and a television connection. A telephone connection is also installed in each room. The kitchens are equipped with crockery and other kitchen utensils.

In the past some students also rented a room in the international guest house of the Studentenwerk Dresden for maximum 3 month and tired to find an long – term accomandation after their arrival in Dresden.

The rooms are also very popular, especially because of the beginning of the semester. Please be aware that it will be difficult to find a cheap apartment afterwards.

For more information please visite:



[Studentenwerk Dresden](#)
find a cheap apartment

Wunderflats

Wunderflats is an online platform on which furnished apartments are offered. Here you can simply enter your preferred location and date and then choose a suitable apartment from the selection and rent it. Since the prices are more expensive than for example in a student hostel, this platform is ideal for all those who are planning to create a shared flat. All information about Wunderflat at:



[Wunderflats Homepage](#)
find your flat in Dresden

If you want to book an apartment, please do it directly via offered website.



Long-term furnished

LONG-TERM ACCOMMODATION

General Informations

The total rent or warm rent („Warmmiete“) comprises two parts: „Kaltmiete“ (cold rent) and „Nebenkosten/Betriebskosten“ (running costs) such as garbage disposal, street and house cleaning costs, and above all, utility costs such as heating and water costs. Some of the running costs depend on the apartment's number of occupants and their personal usage, e.g. parts of the heating, water and wastewater costs, while others are calculated depending on the size of the apartment.

Before you move into an apartment, a security deposit („Kaution“) has to be paid as a financial guarantee in case of damage to the apartment. The amount usually ranges from one to three month's (cold) rent and will be returned when you move out (provided the apartment is in good condition). The particular details of the apartment, the rights and obligations of the tenant and landlord (e.g. period of notice, permission to keep pets) as well as the house rules are set down in the tenancy agreement.

Open-ended rental agreements usually have a three month's period of notice. The landlord cannot terminate the contract without a reason. If a conflict arises with your landlord. A much more inexpensive option for a longer stay is to search for a room in a shared apartment. Such a room may or may not come fully furnished itself. For the most part, this sort of room search is only possible after your arrival, because flatmates usually prefer to meet the new tenant personally before renting out the available room.

wg-gesucht.de

WG-gesucht is a very popular platform for apartment search in Germany where you can look for rooms in shared apartments (none shared apartments are also available). There are also rooms, which are fully furnished and just available for a limited period. In general, the aim for a shared apartment is to split the rent.

On top of the website you can choose filters, e.g. where you are searching and up to what price you can pay. Once you found some shared apartment, there is a long text in German you can translate via internet. Be aware, usually you are not the only person who wants to rent the room. A lot of people apply for the same room. Therefore, you to write an application. In Germany, the apartment itself is not as important as the people you live with „explain why it is nice to live with you. What are you interested in? What activities do you do in your spare time? Do you do sports?

How would you imagine a good living in a shared apartment? In addition, you should involve some facts from the offer, so the people from the offer are sure you have read it and you do not write the same application to everyone. That is why you should read and understand the offer carefully.

To change the web page to English, scroll down. In the lower right corner the setting can be made. Based on my experience, WG-Gesucht is the best website for finding a room in shared apartments.

share a flat



[wg-gesucht.de](https://www.wg-gesucht.de)
find your perfect flatmate



Student dorm

Student dormitories usually represent the simplest and at the same time the most expensive accommodation for students. The rooms are already furnished, the rental period is usually at least 6 - 12 months. Depending on the location and the equipment, the monthly costs range from 300,00 € - 600,00 €.



Hildebrandstraße 7

The dormitory is one of the cheapest currently available on the market. The dorm is located in close proximity to the campus and the student clubs. Shops can be reached on foot in a few minutes. Public transport (bus lines 61, 63, 66, 85) will take you from the Caspar-David-Friedrich-Straße stop right outside the front door to the university.

For more information:
[hildebrandstrasse.de](https://www.hildebrandstrasse.de)



Franklin 20

Franklin20 student dormitory is located in the immediate vicinity of the University of Dresden or HTW with their various facilities. The rooms are mainly apartments consisting of one-, two- and three-room apartments. The rental price already includes all additional costs such as heating, security, electricity, garbage, sewage etc..

For more information:
[studenten-wohnheim-dresden.de](https://www.studenten-wohnheim-dresden.de)



Nido Student

All our apartments at Nido Dresden are spacious and perfectly designed for life in the city. All rooms are ensuite, and each has a study area with a desk, chair and storage, as well as a comfy bed and a large built-in wardrobe. The kitchenettes are also in room and are equipped with a refrigerator, 2-ring hob, microwave and sink, so you can keep your space just the way you like it.

For more information:
[nidostudent.de](https://www.nidostudent.de)



Links

- / www.wg-gesucht.de
- / www.imonet.de
- / www.immobilienscout24.de
- / www.wunderflats.de
- / www.airbnb.de

Here you can find the most popular websites for short and long term accommodation rentals.

- / [ebay-kleinanzeigen.de](https://www.ebay-kleinanzeigen.de)

Here you can buy cheap used furniture and many other things like bed, chair, wardrobe, bike.

- / www.facebook.com/groups/internationalfriendsdresden

An International Facebook community in Dresden for questions or common activities.



PROs

WG-gesucht.de

- / Relatively cheap
- / Common rooms usually already furnished
- / Social contacts
- / Sharing of fixed costs (Internet, GEZ)
- / Large, constantly changing offer
- / Simple processing



CONs

- / Organizational effort
- / A lot of rivals
- / Matter of luck
- / Buying furniture for your own room
- / Living together needs a lot of communication
- / Well-being filling factor strongly responsible from the roommates
- / Renting only from Dresden

Student Dorm

- / Simple,
- / Comfortable
- / Uncomplex
- / Furnished
- / Renting from anywhere in the world
- / Easy access

- / Relatively expensive

Set up shared flat

- / Relatively cheap
- / Sharing of fixed costs (Internet, GEZ)
- / You can live with friends or other fellow students

- / High organizational effort
- / The apartment needs to be completely furnished
- / Contracts such as Internet, electricity, GEZ must be made new
- / When moving out the apartment must be re-painted
- / Renting only from Dresden
- / Proof of income required

Personal recommendation

It is only a recommendation, the search for suitable accommodation can be designed personally according to your preferences. From my experience, the accommodation search process includes 2 steps.

/ First step:

You look for a short term accommodation for at least 3 months (optimal are 6 months). Despite the relatively high costs, the student dormitories are perfect for this because of their simplicity. If you will be not able to find a long-term accommodation within the first 6 months, in most cases the rental contracts in the student dormitory can be easily extended.

/ Second step:

After the accommodation is secured for the first 6 months in Dresden, you can start looking for a long-term accommodation. My personal favorite is a room in an already existing shared apartment. I have already explained the advantages.

If you have further questions regarding accommodation in Dresden, please do not hesitate to contact me !

contact me



Lucas Giehl

+49 351 40470 - 131

lucas.giehl@di-uni.de

Do you offer scholarships?

Please note that we do not offer scholarships or any other kind of financial support to non-EU students at the moment. For information on scholarships, please, contact the German Academic Exchange Service (DAAD).

On their webpage www.daad.de you find some general information on that question and links to more detailed information.

Scholarships /payment



When can I apply?

We recommend applying for accommodation together with the submission of your application documents, in any case not later than upon receipt of your admission confirmation or middle of August respectively.

What happens in case my VISA is denied?

You will receive a full refund of your already transferred money.

application

How do I apply and what are the prices?

Please inform your contact person that you are interested in accommodation, they will gladly provide you with the necessary information including availability and prices.



Can I pay in instalments?

Tuition can be paid in two 50/50 installments. Other options are not available at the moment.

Can I take the IELTS test at DIU?

No.

My university/school was in English, do I need to take the IELTS test?

Yes, this is necessary in order to guarantee independent and uniform evaluation.

I did not finish my school yet, can I apply?

Yes, you will need to submit your degree upon graduation.

Do I have to apply via uni-assist?

No, we ask students to apply directly with us, our procedure is much faster.

Can I work in Germany?

Yes, part-time only, up to 20 hours a week during the semester. After finishing the study program students have a stay back option of 1.5 years in order to find a job according to their newly gained skills.

Can I work at your university?

No, there are currently no job offers for students at DIU.

what you need to know?

Do I have to get health insurance?

Yes. In order to receive a residence permit it is absolutely necessary to have health insurance from a German insurer. It is important to note that travel insurance policies are not valid for trips other than travel and thus not acceptable.

How much does public health insurance cost?

Just under 100 € per month, however, only students up to the age of 30 years are eligible. For older students a special policy has to be booked.

subjects/courses



Can I get detailed information on the content of the courses?

Upon request we can provide students with the curriculum.

Do I have class everyday? How many hours?

That depends on the scheduling of the lecturers. Usually there will be classes everyday, ranging from 2-10 lessons of 45 min each per day.

Is there a semester break?

Depends on the program. For engineering students it is 5 weeks around August, for logistics students it is 3 weeks each beginning in December and July respectively. For NDT students it is around 3 weeks in August.

Can I transfer courses from previous studies?

Under certain circumstances case by case decisions can be made to evaluate previous modules and/or exams but it is not very common.

Are German language skills required?

Our study program and campus structure are in English. German language skills are not essential — however, all international students have German classes integrated into their study programs — no further costs apply.



visa

How long does it take?

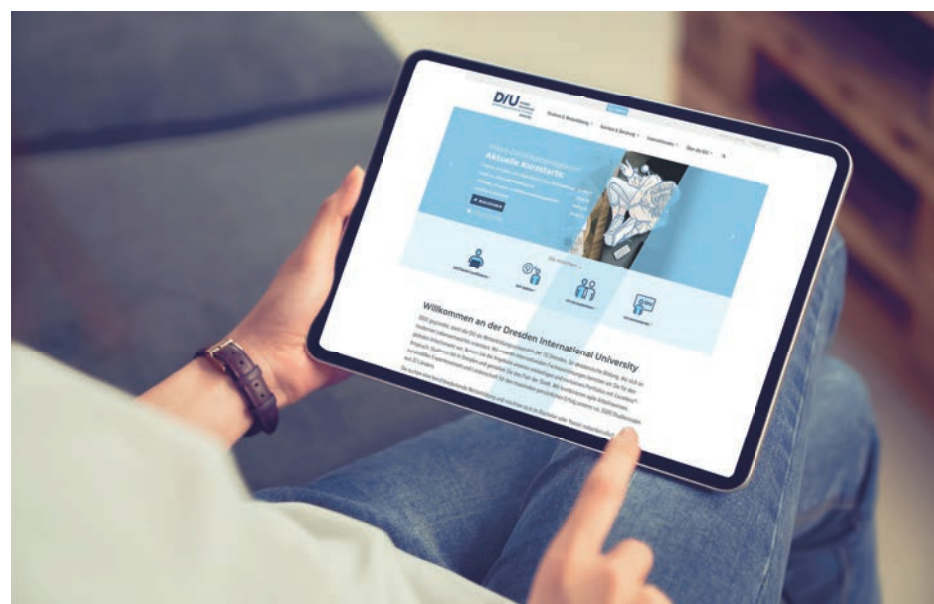
Usually it takes 2-3 months.

Can you send me the original documents?

Yes, we can send out the original contract documents. However, normally this is not required and DIU will only send the originals if it is required in the specific country.

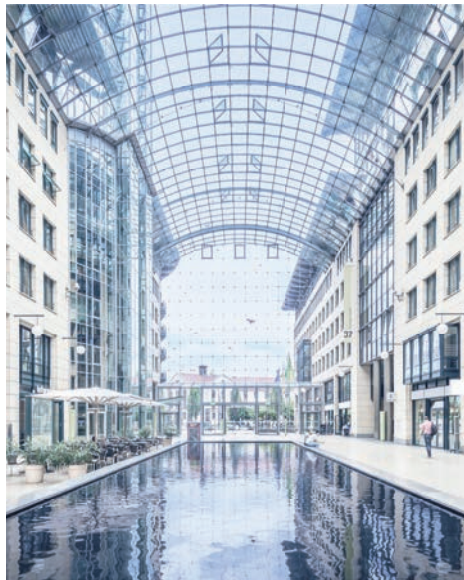
Can I bring my spouse/family?

No, the German student VISA is only valid for the student. However, you can apply for different visa options at your local embassy. Please ask for the opportunities.



2003 
foundation

LOCATION 
**World Trade
Center Dresden**



more than
300
national &
international
lecturers



*Welcome
at DIU* 

students
ca. **2.200**



30%

Number of Foreign
Students from 33 Countries



Network Partners

Companies, Government
Institutions, Research In-
stitutions and Professional
Associations from Germa-
ny and Abroad



Accreditation
**ZEVA &
ACQUIN**



*follow us
around*
[view video](#)

Interdisciplinary Departments

-  Education, Communication & Culture
-  Healthcare
-  Engineering
-  Medical Science
-  Business, Law and Management
-  Digital Management

International courses of study



Do you offer scholarships?

Please note that we do not offer scholarships or any other kind of financial support to non-EU students at the moment. For information on scholarships, please, contact the German Academic Exchange Service (DAAD).

On their webpage www.daad.de you find some general information on that question and links to more detailed information.

Scholarships / payment



When can I apply?

We recommend applying for accommodation together with the submission of your application documents, in any case not later than upon receipt of your admission confirmation or middle of August respectively.

What happens in case my VISA is denied?

You will receive a full refund of your already transferred money.

application

How do I apply and what are the prices?

Please inform your contact person that you are interested in accommodation, they will gladly provide you with the necessary information including availability and prices.



Can I pay in instalments?

Tuition can be paid in two 50/50 installments. Other options are not available at the moment.

Can I take the IELTS test at DIU?

No.

My university/school was in English, do I need to take the IELTS test?

Yes, this is necessary in order to guarantee independent and uniform evaluation.

I did not finish my school yet, can I apply?

Yes, you will need to submit your degree upon graduation.

Do I have to apply via uni-assist?

No, we ask students to apply directly with us, our procedure is much faster.

Can I work in Germany?

Yes, part-time only, up to 20 hours a week during the semester. After finishing the study program students have a stay back option of 1.5 years in order to find a job according to their newly gained skills.

Can I work at your university?

No, there are currently no job offers for students at DIU.



what you need to know?

Do I have to get health insurance?

Yes. In order to receive a residence permit it is absolutely necessary to have health insurance from a German insurer. It is important to note that travel insurance policies are not valid for trips other than travel and thus not acceptable.

How much does public health insurance cost?

Just under 100 € per month, however, only students up to the age of 30 years are eligible. For older students a special policy has to be booked.

subjects / courses



Is there a semester break?

Depends on the program. For engineering students it is 5 weeks around August, for logistics students it is 3 weeks each beginning in December and July respectively. For NDT students it is around 3 weeks in August.

Can I transfer courses from previous studies?

Under certain circumstances case by case decisions can be made to evaluate previous modules and/or exams but it is not very common.

Are German language skills required?

Our study program and campus structure are in English. German language skills are not essential — however, all international students have German classes integrated into their study programs — no further costs apply.

Can I get detailed information on the content of the courses?

Upon request we can provide students with the curriculum.

Do I have class everyday? How many hours?

That depends on the scheduling of the lecturers. Usually there will be classes everyday, ranging from 2-10 lessons of 45 min each per day.



visa

How long does it take?

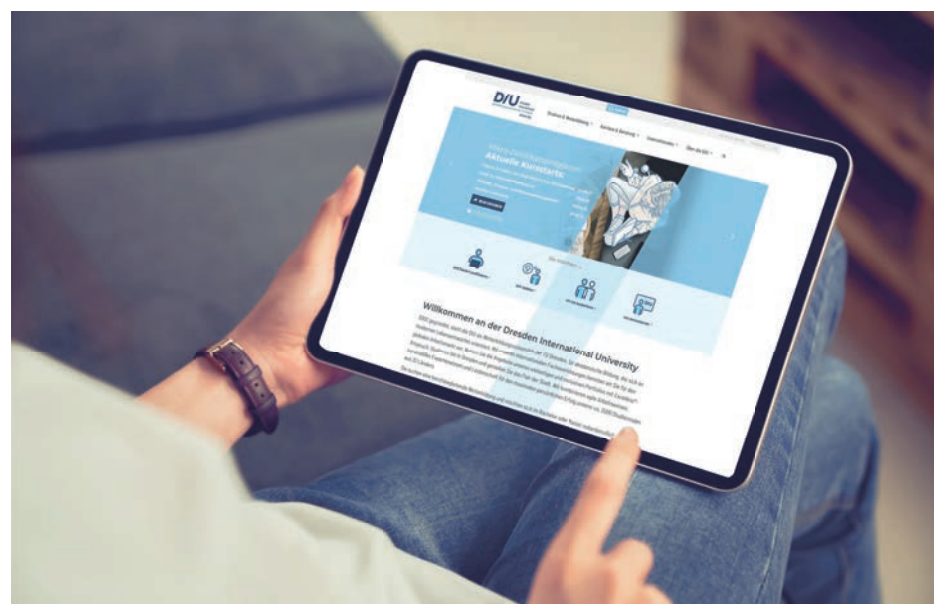
Usually it takes 2-3 months.

Can you send me the original documents?

Yes, we can send out the original contract documents. However, normally this is not required and DIU will only send the originals if it is required in the specific country.

Can I bring my spouse/family?

No, the German student VISA is only valid for the student. However, you can apply for different visa options at your local embassy. Please ask for the opportunities.



get in contact



Jana Schulle

☎ +49 351 40 470 151

✉ jana.schulle@di-uni.de

Non-Destructive Testing (M.Sc.)



Caroline Heller

☎ +49 351 40 470 119

✉ caroline.heller@di-uni.de

Logistics (MBA)

Industrial Management
in Microelectronics (M. Sc.)



Simone Krautz

☎ +49 351 40 470 121

✉ simone.krautz@di-uni.de

Clinical Research (M.Sc.)

Health Care Management (MBA)



Xiaxin Thomas

☎ +49 351 40 470 220

✉ xiaxin.thomas@di-uni.de

Supply Chain Management (B. Sc.)

Follow us on



#dresdeninternationaluniversity

